



# INSTALLATION GUIDE

## S50M Solvent Spray Gun Cleaner



Technical Assistance call (800) 655-5649

## **TOOLS REQUIRED**

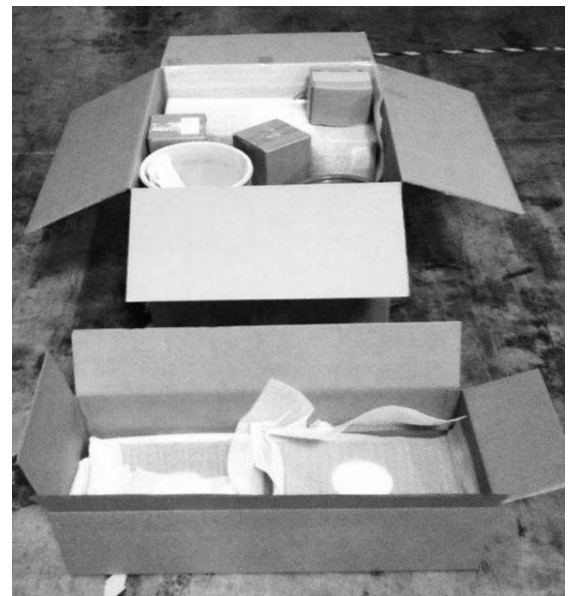
Phillips Screw Driver for (Optional) Stand Kit w/Legs

## **UNPACKAGING THE UNIT**

**Step 1:** Carefully inspect the shipping carton for any signs of transport damage. If damage has occurred contact the Shipping Company & BECCA Inc. immediately

**Step 2:** Remove contents and check components against Photo/List

- E50M Spray Gun Cleaner
- Fluid Container w/ Lid
- Clarifier Kit (3 Containers w/ 2 Lids)
- Clarifier Bubbler
- Black Drain Hose
- Black Cover w/ Handle
- Blow Off Gun Assy w/ blue tubing
- POWERCLEAN QD Assy w/ blue tubing
- Two Hanger Magnets
- Starter Kit
  - Clarifier Packets (12 Packets)
  - WaterWave (2 Bottles)
- Posters (Three)
- Instruction Manual
- Warranty Card
- (Optional) Stand Kit w/ Legs
  - Two Shelves & Four Legs
  - Bag of Screws



**Step 3:** Place unit upside down on soft surface. Attach black drain hose to brass fitting at the bottom center of the base



**Step 4:** Pull

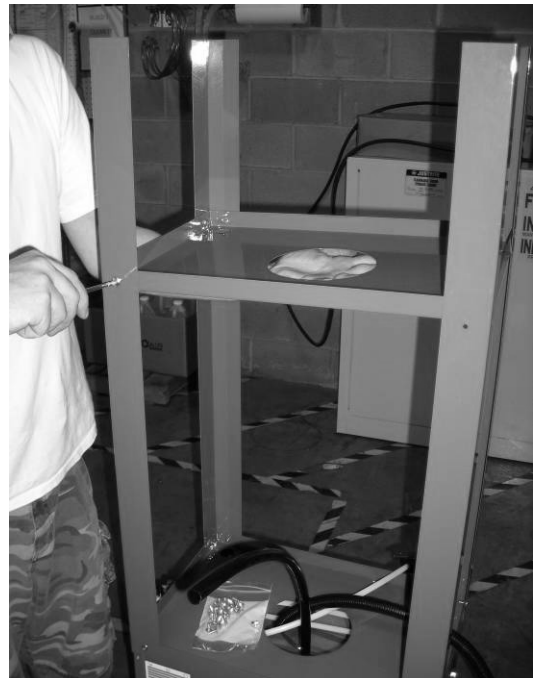
- a) foot pedal & black corrugated tubing
- b) suction line and
- c) black drain hose

through the large middle hole of shelf that attaches to gun cleaner base.

Attach Shelf to the base of the unit with the two small holes in the shelf to the back of the spray gun cleaner. The edges should face towards you.



**Step 5:** Attach four legs and lower shelf. Locate small holes at the back of the unit.

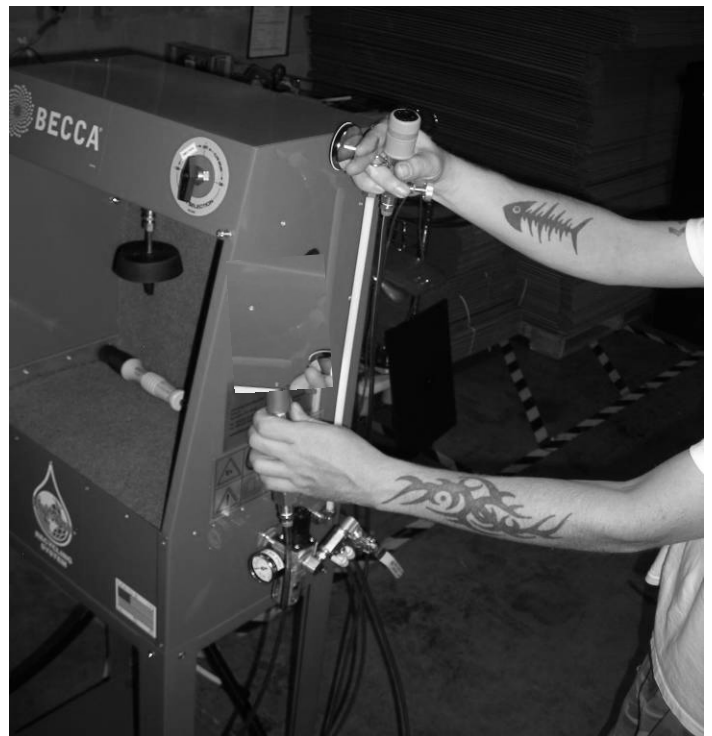


**Step 6:** Put spray gun cleaner upright and attach the blue air lines to the orange “push-in” fittings on the air regulator.



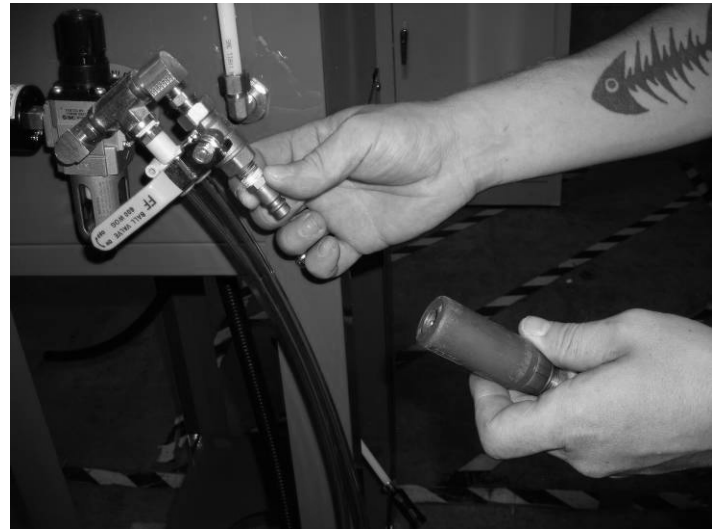
**Step 7:** Place magnetic hook on right and left side of the spray gun cleaner (leave the white cover on the magnets)

Attach: Hang the quick disconnect with the blue air line on the other hook.



**Step 8:** Install a fitting into the ball valve on the air regulator that is compatible with the shop air (due to a variety of applications, this part is not supplied by BECCA).

Connect the shop air to the ball valve (with the Ball valve in the “Off” position).



**Step 9:** Place a 5 Gal container (Used Solvent -Not supplied) on the shelf under the spray gun cleaner with black drain hose (for units with Optional Stand w/ Legs this hose will need to be trimmed by 10” – See Note) in center hole of the lid and suction line hose in the side hole of the lid. Note: Be sure the black suction line hose is all the way down to the spacer.

Place the other 5 Gal container (Clean Solvent -Not supplied) to the side of the unit and insert the white suction line

Note: The hose is shipped longer than required to accommodate cart & wall mount units





**Step 10:** Turn on ball valve to apply air to the system and adjust all air and fluid flow levels.

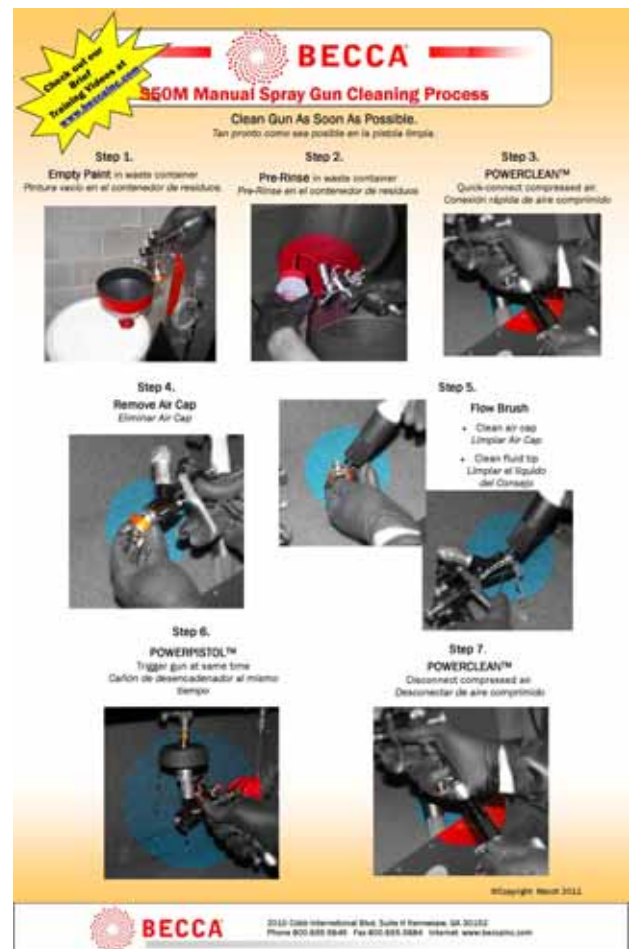
**You are ready to use the BECCA S50M  
Spray Gun Cleaner**

**Keep the cover over the cleaning area  
when not in use.**



**See Page 7**

***We suggest that the recommended Spray Gun Cleaning Procedures (see Poster) be reviewed with everyone using the E50M. There are some major differences compared to solvent gun cleaning.***



## **BECCA Inc. Recommended Spray Gun Cleaning Procedure**

- ✓ Clean the gun as soon as possible after using it
- ✓ Dispose of the paint left in the gun into an approved waste container
- ✓ Rinse the gun with solvent gun cleaning solution and pour the pre-rinse into the approved waste container (be sure to trigger gun over container)
- ✓ Remove the Air Cap and place it in the gun cleaner
- ✓ Attach the quick-disconnect to the gun to protect the air passageway
- ✓ Clean the Fluid Tip and Fluid Nipple aggressively with the flow brush
- ✓ Power Flush the Fluid Passageway completely with the Power Pistol
- ✓ Clean the Air Cap with the Flow Brush, making sure to clean the small holes in each air horn
- ✓ With the air still connected, trigger the gun to expel the solution
- ✓ Wipe down outside of gun and disconnect the air quick disconnect

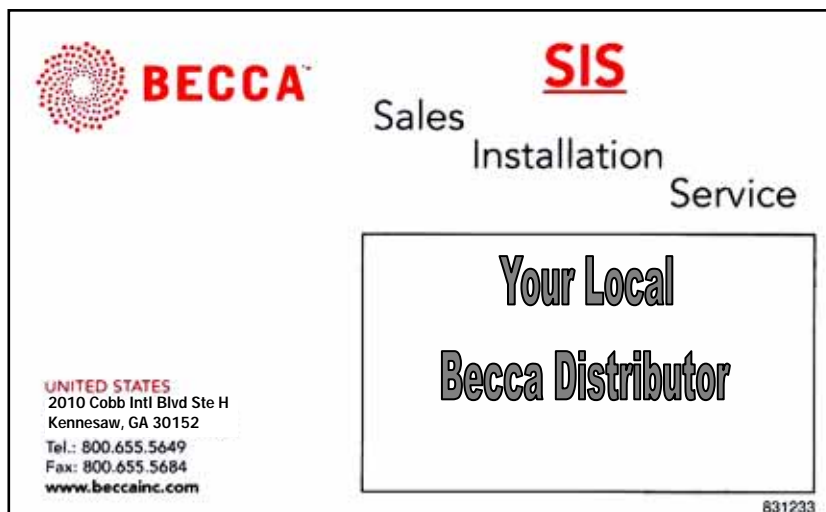
### **Tips from the Pro's**

- Keeping the air passageway dry is key to eliminating contamination
- Use the flow brush and power pistol aggressively, especially with whites, reds, and certain blacks, which are harder to remove.
- Follow the gun manufacturers instructions - do a periodic detail cleaning

## WARRANTY INFORMATION / TECHNICAL ASSISTANCE

The Warranty of your system begins with the Certified Start-up by your local BECCA Distributor. Make sure this is completed and you receive a copy of the Certified Start-up document.

For more information, prices or technical assistance,  
contact your local BECCA distributor or call / fax our  
BECCA Care™ Numbers:



2010 Cobb International Blvd Suite H  
Kennesaw, GA 30152

Tel: (800) 655-5649 **(U.S.A.)**

Fax: (800) 655-5684 **(U.S.A.)**

Copyright © 2011 by BECCA Inc. All Rights Reserved.