



- **Waterborne Spray Gun Cleaners**
- **Waterborne Consumables**



“Innovation for Waste Minimization”



BECCA®

2010 Cobb International Blvd, Suite H Kennesaw, GA 30152
Phone 800.655.5649 Fax 800.655.5684 Internet: www.beccainc.com

Professionals that Approved & Use



Industrial



Automotive



Automotive Refinish



Paint Company



Defense



Military



And many more!

The Professionals Choice, Quality, Technology, Support

Phone 1-800-655-5649 Fax 1-800-655-5684 www.beccainc.com

"Innovation for Waste Minimization"

"Pre-Rinse"

Waterborne Pre-Rinse & Spray Gun Cleaner



Check out our
Training Videos at
www.beccainc.com



• **PORTABLE** •
USE ANYWHERE

• **JUST USE WATER** •
SIMPLE & EFFECTIVE

• **SHIELDED NOZZLE** •
PROTECTION

• **NESHAP COMPLIANT** •
MEETS 6H REQUIREMENTS



BECCA®



Pre-Rinse

Waterborne Pre-Rinse & Spray Gun Cleaner

“Pre-Rinse” PSW-10000 WATERBORNE PRE-RINSE & SPRAY GUN CLEANER:

- **UNIQUE NOZZLE / SHIELD DESIGN** - Makes *Pre-Rinse* a True Pre-Rinse & Paint Gun Cleaner
- **NESHAP COMPLIANT** - Meets 6H National Requirements (No Atomization) Other Spray Bottles in use do not meet NESHAP Requirements.
- **DEFLECTOR SHIELD** - Concentrates Cleaning & Protects from Splash Back
- **SQUEEZE BOTTLE** - Creates Needed Cleaning Pressure
- **RECYCLABLE MATERIALS** - Material of Construction are all Recyclable
- **PRODUCT SPECS** - Container Vol: 17oz. (500ml) Pkg Weight:1.0lbs, Shipping: Via FedEx



“Pre-Rinse”
PSW-10000

Pre-Rinse System PSW-40000

For Pre-Rinse of the Spray Gun prior to Cleaning Process. Includes:

- (1) Pre-Rinse Bottle w/ Deflector Shield**
- (3) 5 Gallon Pail Liners**
- (6) 8 oz Bottles of H₂O Dry**
- (3) Stir Sticks**
- (1) 5 Gallon Container**
- (1) Funnel w/ Lid**



"Little Squirt"

Waterborne Spray Gun Cleaner

Check out our
Training Videos at
www.beccainc.com



• **PORTABLE** •
USE ANYWHERE

• **WATER WAVE™ ADDITIVE** •
MIX w/ HOT WATER
"MICROFILM TECHNOLOGY"

• **HOT FLUID CLEANING**  •
FAST & EFFECTIVE


• **NESHAP COMPLIANT** •
MEETS 6H REQUIREMENTS



System Packages

"Little Squirt" Waterborne Spray Gun Cleaner

"LITTLE SQUIRT" LSW-10000 WATERBORNE SPRAY GUN CLEANER:

- NESHAP COMPLIANT - Meets 6H National Requirements (No Atomization)
- INSULATING WRAP - For keeping fluid Hot for an Extended Time Frame 
- DEFLECTOR SHEILD - Concentrates Cleaning & Protects from Splash Back
- HAND PUMP - Creates Needed Cleaning Pressure
- WATER WAVE - Waterborne Cleaning Solution - (2) 8 oz Bottles—96 cleanings
- MEASURING CUP - For Proper amount of Water Wave Additive to Hot Water
- RECYLABLE MATERIALS - Material of Construction are all Recyclable
- PRODUCT SPECS - Container Vol: 40oz, Pkg Weight: 2.5lbs, Shipping: Via UPS



"Little Squirt"



"Clean to Waste"
System

STEP 1 - RECOMMENDED CLEANING SYSTEM PACKAGES:

"Clean to Waste" System:

Little Squirt, Cleaning Station, Air Kit, Drum Funnel
(Requires Waste Drum—Not Available from BECCA)

"Clean & Recycle" System: Eliminate Liquid Waste Stream

Little Squirt, Cleaning Station, Air Kit, Standard HEAT Tank System w/ Hand Pump, Clarifier Recycling System, H2O Dry Kit, & H2O Dry Funnel



"Clean & Recycle"
System

Step 2 - RECOMMENDED HEAT SYSTEMS:

Basic:

- Existing Hot Tap Water at Facility

Point of Use: Time Saving!

- Kettle HEAT System
- Standard HEAT Tank System w/ Hand Pump
- Continuous HEAT Tank System



Hot Tap Water



Kettle HEAT
System



Std HEAT
Tank System
w/ Hand



BECCA®

2010 Cobb International Blvd, Suite H Kennesaw, GA 30152
Phone 800.655.5649 Fax 800.655.5684 Internet: www.beccainc.com

Accessories

"Little Squirt" Waterborne Spray Gun Cleaner

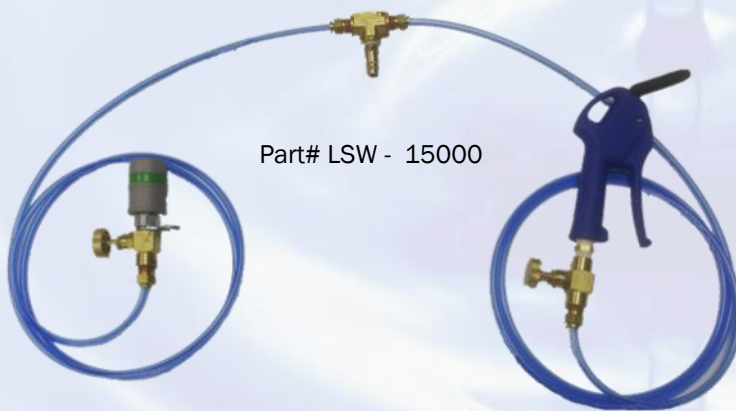
CLEANING STATION



Part# LSW - 12000

- FLEXIBLE DESIGN
Place On a Drum or Table Top or Cart
- FEATURES INCLUDE:
 - Basin w/ 3.1 Gal Capacity
 - Splash Pad
 - Cleaning Brush
 - Tray for Cleaning Tools

AIR KIT



Part# LSW - 15000

- POWERCLEAN
 - Compressed Air to Protect Air Passageways & Improve Cleaning
 - High Flow Quick Disconnect
 - Adjustable Flow Control
- BLOW OFF GUN
 - OSHA Compliant
 - Adjustable Air Flow Control

FUNNEL KITS



DRUM FUNNEL (Waterborne Only)

This Funnel is designed to be screwed to a Drum for Waterborne Waste

Part# LSW - 12500



H2O DRY FUNNEL (Waterborne Only)

This Funnel System is designed to cover the H2O Dry Container.

Part# 836500K



BECCA®

2010 Cobb International Blvd, Suite H Kennesaw, GA 30152
Phone 800.655.5649 Fax 800.655.5684 Internet: www.beccainc.com



Accessories

"Little Squirt" Waterborne Spray Gun Cleaner

CLARIFIER RECYCLING SYSTEM



RECYCLES WASTE FLUID

- 3 Containers
- Dual Bag Filters - 150 & 25 Micron
- Clarifier Packet Starter Kit
- Air Bubbler for Agitation
- See Our Demo Video @ www.beccainc.com

Part# LSW - 18500

H2O DRY SYSTEM

DRIES WASTE WATERBORNE PAINT



Part# CD - 50

- Simple 3 Step Process
- Disposable Container
- Non-Hazardous
Should be Tested w/ Documentation on File
- See Our Demo Video @ www.beccainc.com

HEAT SYSTEMS

Kettle HEAT System
Part# LSW - 20000



KETTLE HEAT SYSTEM (120V @ 4.6A)

- Digital Temperature Controller - Run @ max of 130°F
- Heated Fluid in 3 Minutes
- 51oz (1.5 L) Capacity
- Requires adding Water Wave to Little Squirt container before pouring.
- Must be Placed Outside the Paint Mix Room



Standard HEAT Tank System w/ Hand Pump
Part# LSW - 30000

STD HEAT TANK SYSTEM W/ HAND PUMP (120V @ 4.6A)

- 5 Gal Hot Water Tank w/ Preset Temperature Control
- 7 Day Programmable Timer
- Water Wave should be added to the 5 Gal container prior to filling with water
- Must be Placed Outside the Paint Mix Room



BECCA®

2010 Cobb International Blvd, Suite H Kennesaw, GA 30152
Phone 800.655.5649 Fax 800.655.5684 Internet: www.beccainc.com



BECCA Tools - Salesman's Quick Reference



Little Squirt H2O Units



Part Number	Product Description	List Price	
LSW-10000	Little Squirt Waterborne Spray Gun Cleaner Single Unit	\$81.00	*
LSW-10000 - 6	Little Squirt Waterborne Spray Gun Cleaner Case (6 Units)	\$489.00	*

H2O Pre-Rinse



Part Number	Product Description	List Price	
PSW-10000	Waterborne Pre-Rinse Bottle - Single Unit	\$22.00	
PSW-10000 - 6	Waterborne Pre-Rinse Bottle - Case (Qty 6)	\$124.00	

Little Squirt H2O Options



Part Number	Product Description	List Price	
LSW-12000	Little Squirt Cleaning Station	\$97.00	*
LSW-15000	Little Squirt Air Kit	\$108.00	*
LSW-12500	Little Squirt Drum Funnel w/ Extension Kit	\$64.00	*
LSW-20000	Little Squirt Kettle Heat (51 oz) System	\$108.00	*
LSW-30000	Little Squirt Standard Heat Tank (5 Gal) System w/ Pump	\$705.00	*
LSW-18500	Little Squirt Clarifier Recycling System	\$108.00	*
CD-50	H2O Dry System (Container, 6 Pk H2O Dry, 3 Liners, & 3 Stir Sticks)	\$86.00	*
836500K	H2O Dry Funnel Kit	\$64.00	*

Solvent Squirt Solvent Units



Part Number	Product Description	List Price	
SSS-10000	Solvent Squirt Solvent Spray Gun Cleaner Single Unit	\$22.00	*
SSS-10000 - 6	Solvent Squirt Solvent Spray Gun Cleaner Case (6 Units)	\$124.00	*

Solvent Squirt Solvent Options



Part Number	Product Description	List Price	
SSS-12000	Solvent Squirt Cleaning Station	\$97.00	*
SSS-15000	Solvent Squirt Air Kit	\$108.00	*
SSS-12500	Solvent Squirt Drum Funnel w/ Extension Kit	\$86.00	*
SSS-12555	Drum Funnel Kit	\$59.00	*
SSS-14000	5 Gallon Can Funnel Kit	\$64.00	*

*FOB Kennesaw, GA USA - Prices Subject to Change

Tools-Salesman 2019

BECCA WATERBORNE HEAT SYSTEMS

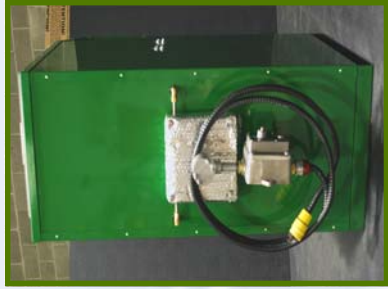
BECCA EXCLUSIVE HEAT ON DEMAND

This rapid heat rise, energy efficient design meets Class I Division 1 requirements allowing it to be placed inside the paint mix room..

A User Reports: “The warm cleaning solution really gets the fluid passageways clean quickly, and my fluid tip, needle and seals stay clean. It’s GREAT!”

BECCA EXCLUSIVE STANDARD HEAT SYSTEM

Similar to a hot water tank, this system utilizes a heat band and is programmed with a supplied timer to reach the ideal cleaning temperature. This affordable heat option is ideal for units placed outside the paint mix room.



Shown on
E300A



Shown on
E100M

BECCA SOLVENTWASH™

Filtration Recycling Systems for Solvent Spray Gun Cleaners

BECCA has determined that when a shop converts to waterborne basecoats, the usage of solvent drops below the threshold that justifies the investment of a new distillation recycling system. The new BECCA SOLVENTWASH™ Series provides:

- Lower new system investment
- Reduced long term maintenance cost
- Less shop floor is required
- Increased painter up-time



Paint Spray Gun Cleaners

Waterborne & Solvent

For The Finishing Professional

Spray Gun Cleaner Benefits

- **Made in USA**
- **Color Coded Equipment -**
 - **Green - Waterborne**
 - **Red - Solvent**
- **Easy To Use**
- **Superior Cleaning Results**
- **Improved Production**
- **NESHAP Compliant**
- **24-Month Warranty**
- **BECCA Care™** - Local sales, installation, training and service



BECCA®

2010 Cobb International Blvd, Suite H Kennesaw, GA 30152
Phone 800.655.5649 Fax 800.655.5684 Internet: www.beccainc.com



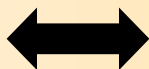
BECCA®

2010 Cobb International Blvd, Suite H Kennesaw, GA 30152
Phone 800.655.5649 Fax 800.655.5684 Internet: www.beccainc.com

Waterborne

E40M
Manual
Spray Gun Cleaner
Economy

- Table Top or Cart Mount
- Wall Mount (Optional)
- Stand w/ Legs (Optional)

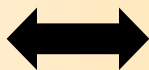


E50M
Manual Flex
Spray Gun Cleaner

- Table Top or Cart Mount
- Wall Mount (Optional)
- Stand w/ Legs (Optional)



E100M
Manual Deluxe
Spray Gun Cleaner



E300A
Manual/Automatic
Spray Gun Cleaner



E700M
Manual
Deluxe Workstation



E800A
Manual/Automatic
Deluxe Workstation



Solvent

S40M
Manual
Spray Gun Cleaner
Economy

- Table Top or Cart Mount
- Wall Mount (Optional)
- Stand w/ Legs (Optional)



S50M
Manual Flex
Spray Gun Cleaner

- Table Top or Cart Mount
- Wall Mount (Optional)
- Stand w/ Legs (Optional)



S100M
Manual Deluxe
Spray Gun Cleaner



S300A
Manual/Automatic
Spray Gun Cleaner



S700M
Manual
Deluxe Workstation



S800A
Manual/Automatic
Deluxe Workstation



BECCA

The BECCA Family of Spray Gun Cleaners



BECCA

Painter Productivity Level		Low/ Med		Medium	High		High		High	High
BECCA E-Series Model		Little Squirt System		E40M	E50M	E100M	E700M	E300A	E800A	
Cleaning Type	Features	Benefits								
	Manual Cleaning	Detailed Cleaning		★	★	★	★	★	★	★
	Automatic Wash Basin	Free up Operator Time								★
	Pre-Rinse System	Improves life of Cleaner		Optional	★	★	★	★	★	★
	Clarifier System w/ FLOCCER™ Sample	1 – 2 Week Clarifier Maintenance.		Optional	Optional	Optional	Optional	Optional	Optional	Optional
	Water Wave™ Sample	Micro-Film Tech. - Low Cost		★	★	★	★	★	★	★
	POWERCLEAN™	Protect Air Passage Ways		★	★	★	★	★	★	★
	POWER Pistol™	Powerful Cleaning								
	Ultra Lite™ High Flow QD's	Corrosion Resistant		★	★	★	★	★	★	★
	Air Blow Off Pistol	Improved Drying		★	★	★	★	★	★	★
	Flow Brush	Stiff for better material removal.		Brush Pad	★	★	★	★	★	★
	St/Steel Basin w/ Cover	Corrosion Resist & Meet Code		Polyethylene Basin	★	★	★	★	★	★
	Splash Pad	Reduce Splash		★	★	★	★	★	★	★
	Water Trap/ Regulator	Protect Pump from moisture		Regulator Only	★	★	★	★	★	★
	Filter Dryer / Regulator	Protect Pump from moisture								
	Cls I Div 1 Heat	Heat Now (Temp in 15 min)			Optional	Optional	Optional	Optional	Optional	Optional
	Std Heat	Tank System (Temp in 2-3 HR)		Optional	Optional	Optional	Optional	Optional	Optional	Optional
	Heat Kettle	Kettle System (Temp in 3 min)		Optional						
	Mounting Stand w/ Legs	Free Standing System			Optional					
	Wall Mount Kit	Free up Floor Space			Optional					
	POWERCLEAN for 2 nd Spray Gun	Protect Air passageways								
	Cover Door 700 & 800	Code issue PA & CA						Optional	Optional	Optional
	Protect Film	Cosmetic maintenance			Optional	Optional	Optional	Optional	Optional	Optional

Only Available from BECCA

Std. Features

Options

E40M

Waterborne Spray Gun Cleaner - Economy



The New BECCA E40M Quick Color Change Cleaner is designed to meet the challenges of getting waterborne spray guns clean enough for a quick color change while doing small parts requiring different colors. (It is to supplement and not replace a proper Spray Gun Cleaner).

STANDARD UNIT FEATURES:

- STAINLESS STEEL BASIN - Compact Design for Tight Space Applications
- POWERPISTOL™ - Quick & Powerful Spray Gun Cleaning
- PULSATING FLUID - Powerful Cleaning Efficiency
- SPLASH PAD - In Basin to Reduce Splash - Self Cleaning
- AIR CAP/FLUID TIP SCRUB BRUSH - Stiff Nylon Bristles for Powerful Cleaning
- AIR PISTOL - Quick Drying Interior & Exterior Residual Fluid
- FOOT PEDAL - Hands-Free Fluid/Pump Control
- GREEN POWDER COATED FINISH - Long Maintenance Life
- 5 GALLON CONTAINER w/ LID - Fluid Reservoir
- INPUT AIR REGULATOR - Protects System Pump
- NESHAP COMPLIANT - Meets NESHAP Requirements

OPTIONAL UPGRADES:

- ENVIRO™ CLARIFIER RECYCLING SYSTEM w/ AIR BUBBLER
Includes 3-container Clarifier System for Fluid Recycling. Includes (3) 5-gallon pails, (2) lids, (1) liner, (1) pre-filter, (1) final filter & Bubbler Kit w/ Flow Control
- MOUNTING STAND with LEGS - Creates a free-standing system
- WALL MOUNT KIT - Includes uni-strut and hardware for mounting to single-skin wall. Additional hardware may be required.



Shown with Optional Mounting Stand with Legs Kit



POWERPISTOL™ - Pulsating Fluid...
Powerful Cleaning for the Fluid Passageways



Air Cap Scrub BRUSH
Stiff Nylon Bristles for Quick Cleaning

Product Specifications:

Dimensions:

Overall:

24"H x 18"W x 12"L
610 mm x 457 mm x 305 mm

Working: (Stainless Basin)

12"D x 16.75"W x 14"H
305 mm x 426mm x 356 mm

Weight: 45 lbs (21 kg)

Shipping: UPS or Freight



BECCA®

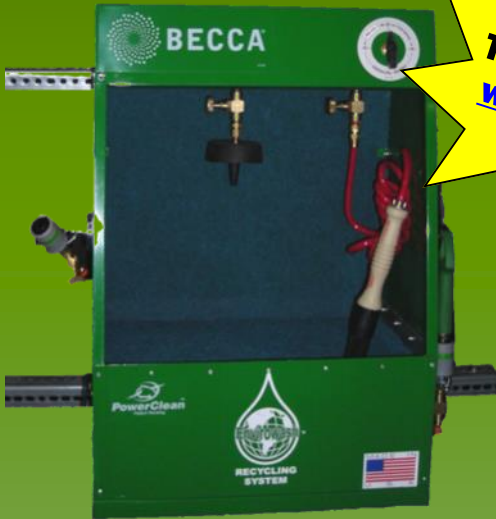
2010 Cobb International Blvd, Suite H Kennesaw, GA 30152
Phone 800.655.5649 Fax 800.655.5684 Internet: www.beccainc.com

Rev: Dec 2015

E50M

Manual Flex Waterborne Spray Gun Cleaner

Check out our
Brief
Training Videos at
www.beccainc.com



Shown with Optional Wall Mount Kit



Shown with Optional
Mounting Stand
with Legs Kit



Can be Table Top or Cart Mounted



BECCA®



- **POWERCLEAN** •
PROTECTS AIR PASSAGEWAYS
- **COMPACT DESIGN** •
TIGHT SPACE APPLICATIONS
- **PULSATING FLUID POWER CLEANING** •
FLUSHES AWAY CONTAMINATION

E50M

Manual Flex Waterborne Spray Gun Cleaner

The New BECCA E50M Flex Spray Gun Cleaner is designed to meet the challenges of getting waterborne spray guns clean quickly....

- Cleans all of the fluid passageways
- Protects air passageways to prevent contamination and corrosion
- Cleaning solution can be recycled and reused many times

STANDARD UNIT FEATURES:

- STAINLESS STEEL BASIN - Compact Design, ideal for Tight Space Applications
- POWERPISTOL™ - Quick & Powerful Spray Gun Cleaning
- POWERCLEAN™ - Compressed Air Connection Protecting Air Passageways
- PULSATING FLUID - Powerful Cleaning Efficiency
- SPLASH PAD - In Basin to Reduce Splash
- FLOW BRUSH - Stiff Nylon Bristles for Powerful Cleaning
- AIR PISTOL - Quick Drying Interior & Exterior of Residual Fluid
- FOOT PEDAL - Pump Control for Hands Free Operation
- COMPOSITE QD'S - High Flow Corrosion Resistant
- GREEN POWDER COATED FINISH - Long Maintenance Life
- 5 GALLON CONTAINER w/ LID - Fluid Reservoir
- AIR FILTER/REGULATOR - Proper System Air Control
- CLARIFIER RECYCLING SYSTEM w/ 3 Containers, Dual Filters & Air Bubbler
- NESHAP COMPLIANT - Meets National Requirements



CLARIFIER
RECYCLING SYSTEM



Shown with Optional Mounting Stand
with Legs Kit

Product Specifications:

Dimensions:

Overall:

24"H x 18"W x 12"D
610 mm x 457 mm x 305 mm
(Add 35.5" to Height w/ Leg Kit)

Working: (Stainless Basin)

12"D x 16.75"W x 14"H
305 mm x 426mm x 356 mm

Weight: 45 lbs (21 kg)

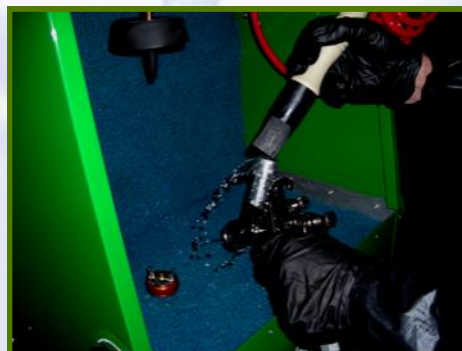
Shipping: Freight

OPTIONAL UPGRADES:

- ENVIRO™ CARTRIDGE FILTRATION w/ 75 Micron Filter
- HEAT SYSTEMS - Elevates Temperature to reduce cleaning time
- MOUNTING STAND with LEGS — Creates a free-standing system
- WALL MOUNT KIT—Includes uni-strut and hardware for mounting to single-skin wall. Additional hardware may be required.



POWERPISTOL™ - Pulsating Fluid...
Powerful Cleaning for the Fluid
Passageways



FLOW BRUSH Stiff Nylon
Bristles for Powerful Cleaning



POWERCLEAN™ Supply's
Compressed Air to the Spray Gun
During the Cleaning Process,
Protecting the Air Passageways



2010 Cobb International Blvd, Suite H Kennesaw, GA 30152
Phone 800.655.5649 Fax 800.655.5684 Internet: www.beccainc.com

E100M

Manual Waterborne Spray Gun Cleaner



- **POWERCLEAN** •
PROTECTS AIR PASSAGEWAYS
- **OVERSIZED STAINLESS WORK BASIN** •
SPACIOUS WORK AREA
- **PULSATING FLUID POWER CLEANING** •
FLUSHES AWAY CONTAMINATION

E100M

Manual Waterborne Spray Gun Cleaner

The New BECCA E100M Spray Gun Cleaner is designed to meet the challenges of getting waterborne spray guns clean quickly....

- Cleans all of the fluid passageways
- Protects air passageways to prevent contamination and corrosion
- Cleaning solution can be recycled and reused many times

STANDARD UNIT FEATURES:

- STAINLESS STEEL BASIN w/ COVER - Oversized work Area
- POWERPISTOL™ - Quick & Powerful Spray Gun Cleaning
- POWERCLEAN™ - Compressed Air Connection Protecting Air Passageways
- PULSATING FLUID - Powerful Cleaning Efficiency
- SPLASH PAD - In Basin to Reduce Splash - Self Cleaning
- FLOW BRUSH/SPIGOT - Combined to Serve both Functions
- AIR PISTOL - Quick Drying Interior & Exterior Residual Fluid
- FOOT PEDAL - Hands-Free Fluid/Pump Control
- COMPOSITE QD's - High Flow Corrosion Resistant
- GREEN POWDER COATED FINISH - Long Maintenance Life
- 5 GALLON CONTAINER w/ LID - Fluid Reservoir
- INPUT AIR FILTER/REGULATOR - Proper System Air Control
- CLARIFIER RECYCLING SYSTEM w/ 3 Containers, Dual Filters & Air Bubbler
- NESHAP COMPLIANT - Meets NESHAP Requirements



CLARIFIER
RECYCLING SYSTEM



Product Specifications:

Dimensions:

Overall:

44"H x 26"W x 23"D
1118 mm x 660mm x 584 mm

Working: (Stainless Basin)

9"D x 21"W x 19"L
228 mm x 533mm x 483 mm

Weight: 110 lbs (50 kg)

Shipping: Via Freight

OPTIONAL UPGRADES:

- ENVIRO™ CARTRIDGE FILTRATION w/ 75 Micron Filter
- HEAT SYSTEMS - Elevates Temperature to reduce cleaning time
- SPLASH CONE - Enclosure to contain Spray Gun Flush Splash



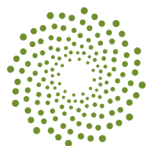
POWERPISTOL™ - Pulsating Fluid...
Powerful Cleaning for the Fluid
Passageways



**OVERSIZED STAINLESS
STEEL BASIN** A Spacious
Work Area for Easy Use



POWERCLEAN™ Supply's
Compressed Air to the Spray Gun
During the Cleaning Process,
Protecting the Air Passageways



BECCA®

2010 Cobb International Blvd, Suite H Kennesaw, GA 30152
Phone 800.655.5649 Fax 800.655.5684 Internet: www.beccainc.com

E700M

Manual

Waterborne Spray Gun Cleaning Workstation



Check out our
Brief
Training Videos at
www.beccainc.com



- **POWERCLEAN** •
PROTECTS AIR PASSAGEWAYS
- **OVERSIZED STAINLESS WORK AREA** •
LARGE ERGONOMIC WORK SPACE
- **PULSATING FLUID POWER CLEANING** •
FLUSHES AWAY CONTAMINATION

E700M

Manual

Waterborne Spray Gun Cleaning Workstation

The BECCA E700M Manual Spray Gun Cleaner Workstation is designed to meet the challenges of getting waterborne spray guns clean quickly....

- Cleans all of the fluid passageways
- Protects air passageways to prevent contamination and corrosion
- Cleaning solution can be recycled and reused many times

STANDARD UNIT FEATURES:

- STAINLESS STEEL GRILLED WORK AREA - Spacious and Painter Friendly
- POWERPISTOL™ - Quick & Powerful Spray Gun Cleaning
- POWERCLEAN™ - Compressed Air Connection Protecting Air Passageways
- PULSATING FLUID - Powerful Cleaning Efficiency
- FLOW BRUSH - Improved Cleaning of dried material
- AIR PISTOL - Quick Drying Interior & Exterior Residual Fluid
- COMPOSITE QD's - High Flow Corrosion Resistant
- GREEN POWDER COATED FINISH - Long Maintenance Life
- 5 GALLON CONTAINER w/ LID - Fluid Reservoir
- INPUT AIR FILTER/REGULATOR - Proper System Air Control
- CLARIFIER RECYCLING SYSTEM w/ 3 Containers, Dual Filters & Air Bubbler
- NESHAP COMPLIANT - Meets NESHAP Requirements



CLARIFIER
RECYCLING SYSTEM



Shown with
optional cover

Product Specifications:

Dimensions:

Overall:

57"H x 26"W x 26"D

1447 mm x 660 mm x 660 mm

Working: (Stainless Steel Working Area)

16"H x 25"W x 22"D

406 mm x 635 mm x 559 mm

Weight: 250 lbs (114 kg)

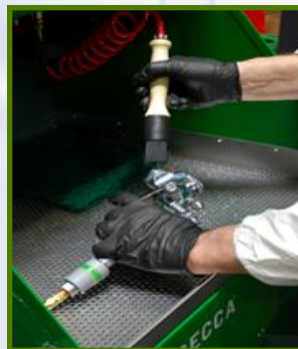
Shipping: Via Freight

OPTIONAL UPGRADES:

- ENVIRO™ CARTRIDGE FILTRATION - Less Maintenance & Improve Productivity with a Two Stage Filtration System (75 & 25 Micron Filters)
- HEAT SYSTEMS - Elevates Temperature to reduce cleaning time
- COVER DOOR - Required in some Jurisdictions



POWERPISTOL™ - Pulsating Fluid... Powerful Cleaning for the Fluid Passageways



STAINLESS WORKSTATION
A Spacious Work Area for Easy Use



POWERCLEAN™ Supply's Compressed Air to the Spray Gun During the Cleaning Process, Protecting the Air Passageways



BECCA®

2010 Cobb International Blvd, Suite H Kennesaw, GA 30152
Phone 800.655.5649 Fax 800.655.5684 Internet: www.beccainc.com

E300A

Automatic/Manual Waterborne Spray Gun Cleaner



Check out our
Brief
Training Videos at
www.beccainc.com



- **POWERCLEAN** •
PROTECTS AIR PASSAGEWAYS
- **AUTOMATIC WASH BASIN** •
HANDS-FREE OPERATION
- **PULSATING FLUID POWER CLEANING** •
FLUSHES AWAY CONTAMINATION

E300A

Automatic/Manual Waterborne Spray Gun Cleaner

The BECCA E300A Automatic Spray Gun Cleaner is designed to meet the challenges of getting waterborne spray guns clean quickly....

- Cleans all of the fluid passageways
- Protects air passageways to prevent contamination and corrosion
- Cleaning solution can be recycled and reused many times

STANDARD UNIT FEATURES:

- STAINLESS STEEL BASIN w/ COVER - Compact Work Area
- AUTOMATIC HANDS-FREE CYCLE - Free up operator time
- POWERPISTOL™ - Quick & Powerful Spray Gun Cleaning
- POWERCLEAN™ - Compressed Air Connection Protecting Air Passageways
- PULSATING FLUID - Powerful Cleaning Efficiency
- FLOW BRUSH - Improved Cleaning of dried material
- AIR PISTOL - Quick Drying Interior & Exterior Residual Fluid
- COMPOSITE QD'S - High Flow Corrosion Resistant
- GREEN POWDER COATED FINISH - Long Maintenance Life
- 5 GALLON CONTAINER w/ LID - Fluid Reservoir
- INPUT AIR FILTER/REGULATOR - Proper System Air Control
- CLARIFIER RECYCLING SYSTEM w/ 3 Containers, Dual Filters & Air Bubbler
- NESHAP COMPLIANT - Meets NESHAP Requirements



CLARIFIER
RECYCLING SYSTEM



Product Specifications:

Dimensions:

Overall:

42.5"H x 15"W x 26"D
1080 mm x 381 mm x 660 mm

Working: (Stainless Basin)

14"D x 20"L x 12"W
356 mm x 508mm x 305 mm

Weight: 170 lbs (77 kg)

Shipping: Via Freight

OPTIONAL UPGRADES:

- ENVIRO™ CARTRIDGE FILTRATION— Includes a two stage filtration system (75 & 25 Micron Filters)
- HEAT SYSTEMS - Elevates Temperature to reduce cleaning time
- DUAL POWERCLEAN KIT - Second Spray Gun Connection in the Wash Basin



POWERPISTOL™ - Pulsating Fluid... Powerful Cleaning for the Fluid Passageways



STAINLESS STEEL AUTOMATIC WASH BASIN Maximize Operator Productivity



POWERCLEAN™ Supply's Compressed Air to the Spray Gun During the Cleaning Process, Protecting the Air Passageways



2010 Cobb International Blvd, Suite H Kennesaw, GA 30152
Phone 800.655.5649 Fax 800.655.5684 Internet: www.beccainc.com

E800A

Deluxe Automatic/Manual Waterborne Spray Gun Cleaning Workstation



Check out our
Brief
Training Videos at
www.beccainc.com

Spray Gun
Not Included



BECCA®



- **POWERCLEAN** •
PROTECTS AIR PASSAGEWAYS
- **AUTOMATIC WASH BASIN** •
HANDS-FREE OPERATION
- **PULSATING FLUID POWER CLEANING** •
FLUSHES AWAY CONTAMINATION

E800A

Deluxe Automatic/Manual Waterborne Spray Gun Cleaning Workstation

The BECCA E800A Automatic Spray Gun Cleaner Workstation is designed to meet the challenges of getting waterborne spray guns clean quickly....

- Cleans all of the fluid passageways
- Protects air passageways to prevent contamination and corrosion
- Cleaning solution can be recycled and reused many times

STANDARD UNIT FEATURES:

- STAINLESS STEEL BASIN w/ COVER - Painter Friendly
- AUTOMATIC HANDS-FREE CYCLE - Free up operator time
- POWERPISTOL™ - Quick & Powerful Spray Gun Cleaning
- POWERCLEAN™ - Compressed Air Connection Protecting Air Passageways
- PULSATING FLUID - Powerful Cleaning Efficiency
- FLOW BRUSH - Improved Cleaning of dried material
- AIR PISTOL - Quick Drying Interior & Exterior Residual Fluid
- COMPOSITE QD'S - High Flow Corrosion Resistant
- GREEN POWDER COATED FINISH - Long Maintenance Life
- 5 GALLON CONTAINER w/ LID - Fluid Reservoir
- INPUT AIR FILTER/REGULATOR - Proper System Air Control
- CLARIFIER RECYCLING SYSTEM w/ 3 Containers, Dual Filters & Air Bubbler
- NESHAP COMPLIANT - Meets NESHAP Requirements



CLARIFIER
RECYCLING SYSTEM



Product Specifications:

Dimensions:

Overall:

57"H x 26"W x 26"D

1447 mm x 660 mm x 660 mm

Working: (Stainless Steel Basin)

14"H x 20"L x 12"W

356mm x 508 mm x 305 mm

Weight: 270 lbs (123 kg)

Shipping: Via Freight

OPTIONAL UPGRADES:

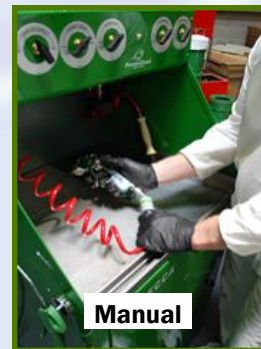
- ENVIRO™ CARTRIDGE FILTRATION - Less Maintenance & Improve Productivity with a Two Stage Filtration System (75 & 25 Micron Filters)
- HEAT SYSTEMS - Elevates Temperature to reduce cleaning time
- COVER DOOR - Required in some Jurisdictions
- DUAL POWERCLEAN KIT- Second Spray Gun Connection in the Wash Basin



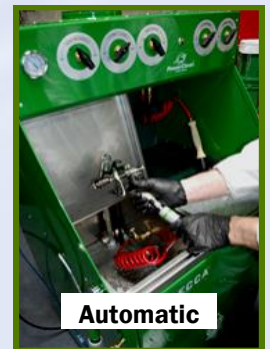
POWERPISTOL™ - Pulsating Fluid... Powerful Cleaning for the Fluid Passageways



STAINLESS STEEL AUTOMATIC WASH BASIN Maximize Operator



Manual



Automatic

POWERCLEAN™ Supply's Compressed Air to the Spray Gun During the Cleaning Process, Protecting the Air Passageways



BECCA®

2010 Cobb International Blvd, Suite H Kennesaw, GA 30152
Phone 800.655.5649 Fax 800.655.5684 Internet: www.beccainc.com

ENVIRO

Options & Accessories For Waterborne Spray Gun Cleaners



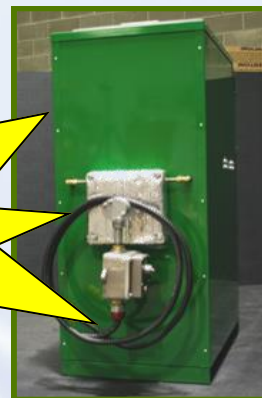
BECCA WATERBORNE HEAT SYSTEMS

BECCA EXCLUSIVE HEAT ON DEMAND

This rapid heat rise, energy efficient design meets Class I Division 1 requirements allowing it to be placed inside the paint mix room.

A User Reports: "The warm cleaning solution really gets the fluid passageways clean quickly, and my fluid tip, needle and seals stay clean. It's GREAT!"

Shown on
E300A



Check out our
Brief
Training Videos at
www.beccainc.com

BECCA EXCLUSIVE STANDARD HEAT SYSTEM

Similar to a hot water tank, this system utilizes a heat band and is programmed with a supplied timer to reach the ideal cleaning temperature. This affordable heat option is ideal for units placed outside the paint mix room.



Shown on
E100M

BECCA COVER DOOR — For Workstation Systems

The E700M & E800A Spray Gun Cleaning Workstation's have available a Cover Door to meet local jurisdiction requirements. Although not required per NESHAP. Some jurisdiction interpretations lead to its addition.



BECCA PROTECT FILM

This Poly maintenance material is designed to keep your investment looking good through it's life. It is easily applied like a decal and can be peeled off when ready to apply a new coat. It can be provided on a unit at the factory or purchased by the roll to be applied in the field. .



BECCA®

2010 Cobb International Blvd, Suite H Kennesaw, GA 30152
Phone 800.655.5649 Fax 800.655.5684 Internet: www.beccainc.com

ENVIRO

Options & Accessories For Waterborne Spray Gun Cleaners



BECCA FILTRATION SYSTEMS - FREE UP OPERATOR TIME

BECCA's Filtration Systems are designed to remove paint residues from the system continually. This in combination with the proprietary BECCA Clarification System provides a cleaner process and allows for less periodic maintenance of the system.

BECCA SINGLE STAGE CARTRIDGE FILTRATION

Single Stage Filter System includes a 75 Micron Filter Module to help provide a more productive system.



Single Stage
Cartridge System

BECCA DUAL STAGE CARTRIDGE FILTRATION

Dual Stage Filter System includes a 75 Micron and a 25 Micron Filter providing the best overall paint residue control.



Dual Stage
Cartridge System

Note: We see at 40 Micron. So you have a sense on how efficient Filtering to 25 Micron can be.



Dual Cartridge System
Shown on E800A

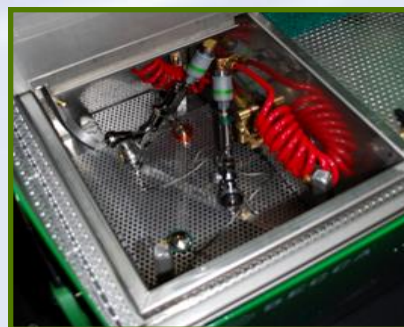
BECCA DUAL POWERCLEAN KIT— For 2ND Spray Gun in The Wash Basin

This system is designed to provide POWERCLEAN compressed air connections to two spray guns in the Wash Basin at the same time.



ENVIRO E300A DUAL POWERCLEAN KIT

-Second Spray Gun Connection in the Wash Basin



ENVIRO E800A DUAL POWERCLEAN KIT

-Second Spray Gun Connection in the Wash Basin



BECCA®

2010 Cobb International Blvd, Suite H Kennesaw, GA 30152
Phone 800.655.5649 Fax 800.655.5684 Internet: www.beccainc.com



BECCA

BECCA PRICING

**Manual
Waterborne**

Phone: 800-655-5679 Fax: 800-655-5684 www.BeccaInc.com

Prices Effective January 1, 2019. Prices Subject to Change without Notice.

Payment Terms 2% 10 Days of Invoice. (Excludes Credit Cards and Credits for payment) /or Net 30.

(Lift Gates are an Extra Charge) Shipping & Handling Pre-Paid add unless otherwise specified. Prices are in USD.

E40M	Manual Spray Gun Cleaner w/Removable Cover, Brush, Mounted Power Pistol, Foot Pedal, 5-Gal Poly Container w/Lid & Liner	\$1,465
Part #	Options - E40M Only	Price
830401K	Mounting Stand with Legs add	\$122
830402K	Wall Mount Kit add	\$122
831004AP5	"BECCA Protect Film" applied to unit add	\$122

All Units Below Include: 5 Gal Poly Container w/Lid & Liner, also the Pre-Rinse System which includes: container, funnel, 3 liners, stir sticks, Pre-Rinse bottle, 6 pk of H2O Dry

E50M	MANUAL Spray Gun Cleaner w/Removable Cover, POWERCLEAN, Flow Brush, Power Pistol, Foot Pedal, Blow Gun & 1 Hi Flow QD	\$2,051
Part #	Options - E50M Only	Price
830401K	Mounting Stand with Legs add	\$122
830402K	Wall Mount Kit add	\$122
831004AP5	"BECCA Protect Film" applied to unit add	\$122

E100M	MANUAL Spray Gun Cleaner w/Removable Cover, POWERCLEAN, Flow Brush, Power Pistol, Foot Pedal, Blow Gun, 1 Hi Flow QD,	\$2,788
Part #	Options - E100M Only	Price
825161	SPLASH CONE - Contains Spray Gun Flush Splash add	\$56
831004AP10	"BECCA Protect Film" applied to unit add	\$179
Turbo100	Turbo Pressure Pot & Fluid Line Cleaner System (Add'l Parts Req'd for Connection) add	\$1,080

E700M	MANUAL WORKSTATION Spray Gun Cleaner includes: POWER CLEAN, Flow Brush, Power Pistol, Blow Gun, 1 Hi Flow QD & Blow Gun	\$5,157
Part #	Options - E700M Only	Price
824633K	6" Exhaust Kit add	\$129
830128	Cover Door add	\$256
831004AP80	"BECCA Protect Film" applied to unit add	\$239
Turbo700	Turbo Pressure Pot & Fluid Line Cleaner System (Add'l Parts Req'd for Connection) add	\$1,437

Part #	Options Common to All Manual Units	Price
HeaterEXP	HEAT ON DEMAND System (For Cls I Div 1 Loc - factory installed on all units except E40M or E50M) add	\$1,596
Heater5	HEATER System (For General Purpose Locations - includes: Insulated Metal Can, Lid & Liner) add	\$768
LSW-18500	Clarifier Recycling System - Includes Bubbler & 3 container Clarifier System for Fluid Recycling	\$108
825042K	Single Cartridge Filtration Recycling - Continuous Process filtration includes: 1-75 Micron Filter for Fluid Recycling (Assembly Req'd)	\$768
825064K	Dual Cartridge Filtration Recycling - Continuous Process filtration includes: 2-75 Micron Filter & 1-25 Micron Filter for Fluid Recycling add	\$1,535



BECCA

BECCA PRICING

**Automatic
Waterborne**

Phone: 800-655-5679 Fax: 800-655-5684 www.BeccaInc.com

Prices Effective January 1, 2019. Prices Subject to Change without Notice.

Payment Terms 2% 10 Days of Invoice. (Excludes Credit Cards and Credits for payment) /or Net 30.

(Lift Gates are an Extra Charge) Shipping & Handling Pre-Paid add unless otherwise specified. Prices are in USD.

All Units Below Include: 5 Gal Poly Container w/Lid & Liner, also the Pre-Rinse System which includes: container, funnel, 3 liners, stir sticks, Pre-Rinse bottle, 6 pk of H2O Dry

E300A	AUTOMATIC Spray Gun Cleaner w/Automatic Wash Basin, POWERCLEAN, Flow Brush, Power Pistol, Blow Gun & 1 Hi Flow QD	\$3,868
Part #	Options - E300A Only	Price
825021K	4" Exhaust Kit add	\$179
831004AP30	"BECCA Protect Film" applied to unit add	\$179
Turbo300	Turbo Pressure Pot & Fluid Line Cleaner System (Add'l Parts Req'd for Connection) add	\$1,080

E800A	AUTOMATIC/MANUAL DELUXE WORKSTATION Spray Gun Cleaner w/Automatic Wash Basin, POWERCLEAN, Flow Brush, PowerPistol, 2 Hi-Flow QD's & Blow Gun	\$7,245
Part #	Options - E800A Only	Price
824633K	6" Exhaust Kit add	\$129
830128	Cover Door add	\$256
831004AP80	"BECCA Protect Film" applied to unit add	\$239
Turbo800	Turbo Pressure Pot & Fluid Line Cleaner System (Add'l Parts Req'd for Connection) add	\$1,437

Part #	Options Common to All Automatic Units	Price
824623K	Extension Tube & Extended Spray Nozzle add	\$50
825125K	POWERCLEAN Kit for 2nd Spray Gun Flush Splash add	\$129
HeaterEXP	HEAT ON DEMAND System (For CIs I Div 1 Loc - factory installed on all units except E40M or E50M) add	\$1,596
Heater5	HEATER System (For General Purpose Locations - includes: Insulated Metal Can, Lid & Liner) add	\$768
LSW-18500	Clarifier Recycling System - Includes Bubbler & 3 container Clarifier System for Fluid Recycling	\$108
825042K	Single Cartridge Filtration Recycling - Continuous Process filtration includes: 1-75 Micron Filter for Fluid Recycling (Assembly Req'd)	\$768
825064K	Dual Cartridge Filtration Recycling - Continuous Process filtration includes: 2-75 Micron Filter & 1-25 Micron Filter for Fluid Recycling add	\$1,535



WATER WAVE™

Check Out
Our Brief
Training Videos at
www.beccainc.com

By **BECCA**



Waterborne Cleaning Solution Concentrate w/ MicroFilm Technology



Works great with
Automotive Refinish Waterborne
Basecoat Paints Including:

Axalta®
PPG®
Sherwin Williams®
BASF®
AKZO Nobel®
Valspar®
& Others

- Highly Active w/ Heated Cleaning Systems
- Leaves MicroFilm - making next cleaning easier
- PH Neutralizer
- Non-Hazardous
- Biodegradable
- Phosphate Free
- Flexible - Can be Used w/ any Brand of Spray Gun Cleaner
- (1) 8oz Bottle per 5 Gal of Water

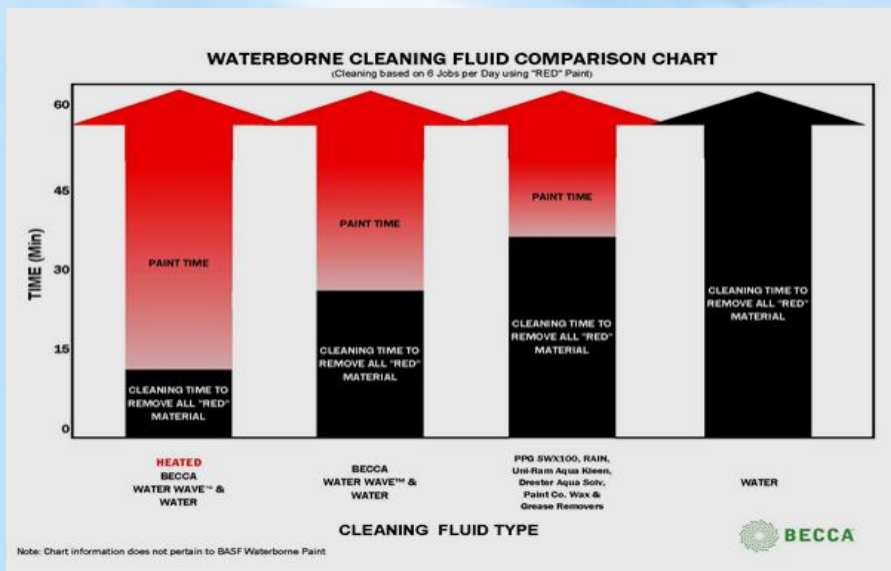


Contains: Anti-Bacterial,
Anti-Foaming, Surfactant,
& Orange Scent

Available in: 6 Pack - 825190-6
12 Pack - 825190-12

*Visit www.beccainc.com to see
the Water Wave™ Formulation
for Your Paint Brand

FASTER CLEANING



COST EFFECTIVE

Brand	Cost/5 Gal
BECCA Water Wave™	~\$21 - 23
PPG SWX 100	~\$36 - \$38
Uni-Ram Aqua Kleen	~\$51
Cumberland Rain or B-Tec Aqua Max	~\$57
Drester Aqua Solv	~\$79
Wax & Grease Removers	~\$30 - \$285
BASF 915, 700-1 or 700-10	~\$190 - \$285

Dispose of Waste in Accordance with all Federal, State & Local Requirements



2010 Cobb International Blvd NW, Kennesaw, GA 30152
TEL: 800-655-5649 FAX: 800-655-5684

Jan 2019

Please read before using this product




WATER WAVE™

Check Out
Our Brief
Training Videos at
www.beccainc.com

Tips For Success!!!

Water Wave™ is a concentrate Cleaning Solution designed specifically for Waterborne materials. Mixed with water and used in a heated state, WaterWave™ will clean the most difficult colors like Red's & White's quickly. The Micro-Film™ (No effect to paint materials) coating left from its use will add to the speed of cleaning the Spray Gun.

- 1) Use Water Wave™ mixed with water (distilled or tap). One bottle makes 5 Gallons of cleaning solution.
- 2) When heated  the Water Wave™ cleaning solution becomes highly active and speeds up the cleaning process.
- 3) Very Important! - Complete a detail cleaning of the Spray Gun prior to using Water Wave™ to assure the Micro-Film™ coating will reach all surfaces. Where ever paint is adhered on the Spray Gun the Micro-Film™ will not coat the surface.
- 4) Equally as Important! - Do not perform a final chase with any product other than Water Wave™. Chasing will remove the Micro-Film™ coating and the enhanced cleaning performance.



BECCA

2010 Cobb International Blvd NW, Kennesaw, GA 30152
TEL: 800-655-5649 FAX: 800-655-5684

Jan 2019



H₂O DRY™

Check Out
Our Brief
Training Videos at
www.beccainc.com

By  **BECCA**

Specially Formulated To Dry Waste Waterborne Paint

Works great with
Waterborne Basecoat
Paints including:

Axalta®
PPG®
Sherwin Williams®
BASF®
AKZO Nobel®
Valspar®
& Others



H₂O Dry Kit

- Dries Waterborne Waste Paint in an Hour
- Simple 3-Step Process w/ Easy to follow instructions
- Disposable Container
- Non-Hazardous (Should be tested w/ documentation on file)
- Use 2 - 8oz Bottles Per 2.5 Gal of Waste Paint or a partial Scoop (1 : 10 Ratio) w/ Disposable Cups



Step One

Add 2 Containers of H₂O Dry to
2.5 Gallons of Paint Waste



Step Two

Stir Vigorously for Several
Minutes to Completely
Mix in H₂O Dry



Step Three

After One Hour, it will Gel...
Additional time will allow
Waste to Dry Further

Or



Disposable Cup

Add H₂O Dry to Disposable
Cup, Stir, Let Dry before
Disposing

Dispose of Waste in Accordance with all Federal, State & Local Requirements

Available:

- Full Kit - Includes (1) Container, (3) Liners, (6) Bottles of H₂O Dry, (3) Stirring Sticks
- Replenish Kit - Includes (3) Liners, (6) Bottles of H₂O Dry, (3) Stirring Sticks
- Replacement Powder Kit - Includes (6) Bottles of H₂O Dry
- 84 oz. Container - Includes 84oz of H₂O Dry & Scoop
- 25 lbs Bulk Container - Includes 25 Lbs. of H₂O Dry & Scoop (Best Value)

CD-50
836001K
836002-6
836840
836025



2010 Cobb International Blvd NW, Kennesaw, GA 30152
TEL: 800-655-5649 FAX: 800-655-5684 www.beccainc.com

Jan 2019



FLOCCERTM

By  **BECCA**

Waste Water Treatment Flocculation Powder

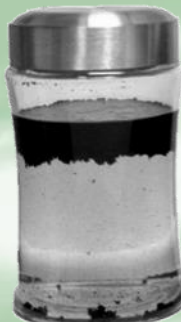
← Specially Formulated For Use
w/ Waterborne Paint



- **Shaker Top**
Quick Use
- **Measuring Scoop**
Use Exactly what is Required
- **Very Low Dusting**
Less Mess
- **Flexible**
Can be Used with any Paint Brand or Spray Gun Cleaner

Before

After



Dispose of Waste in Accordance with all
Federal, State & Local Requirements

- **Dissolving Paper**
No Mess
- **Pre-Measured**
Use Exactly what is Required
- **Dust-Free**
Safe for the Operator
- **Flexible**
Can be Used with any Paint Brand or Spray Gun Cleaner

Available in:

- Bulk Container: 84 Oz Container P/N: 825189
- 25-Pack: 25 Dissolving Packets P/N: 825185-25
- 100-Pack: 100 Dissolving Packets P/N: 825185-100



2010 Cobb International Blvd NW, Kennesaw, GA 30152
TEL: 800-655-5649 FAX: 800-655-5684 www.beccainc.com

Jan 2019



Spray Gun System
Complete Advanced Gun Polishing System
☉ Waterborne and ☉ Solvent

New or Used...RE-NU™ your Spray Gun to Like New Performance!

RE-NU™ is a process designed to restore the performance of any spray gun. The polish will remove/reduce micro inclusions from the surface. This will provide less friction and turbulence in the flow of fluid and air to maximize performance. The system works with any material but works exceptional with metal surfaces.

- No Fish Eye
- Simple 4 Step Process
- Use Recommended Every 3 - 6 months



Part # 825175

Kit Includes: Polishing Cone and Paste, Gloves, Microfiber Cloth, Spray Bottle of EZ Release, Nylon Brush, & Cleaning Pad



From This



To This

Check out our brief Training Videos at www.beccainc.com



Made In U.S.A.

RE-NU Spray Gun System

Complete Advanced Gun Polishing System

☉ Waterborne and ☉ Solvent

Four Steps

RE-NU™ is a process designed to restore the performance of any spray gun. The polish will remove/reduce micro inclusions from the surface. This will provide less friction and turbulence in the flow of fluid and air to maximize performance. The system works with any material but works exceptional with metal surfaces. The system is a 4 Step process. We will review each step to assure success.

Step One: Tear Down

Tear down the spray gun completely. This includes air and fluid passageways.

Step Two: Detail Cleaning of the Spray Gun

The spray gun should be completely dis-assembled (particularly the first time) to assure removal of all residues.

We recommend the use of:

Waterborne Coatings: Acetone mixed w/ Aircraft Stripper 10:1 Ratio

Other Coatings: Solvent of choice mixed w/ Aircraft Stripper 10:1 Ratio

Clean all parts including Air passageways.



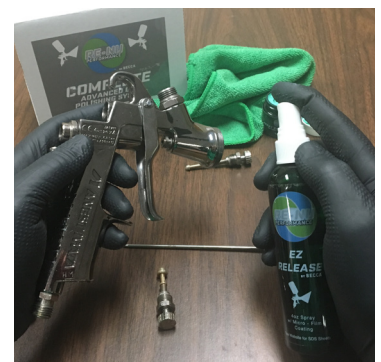
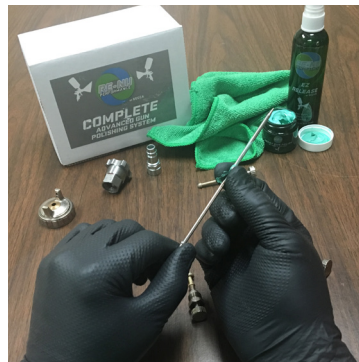
Step Three: RE-NU Polish

Apply RE-NU Polish to all surfaces of the spray gun and its parts. Make sure to focus on the needle tip area (Only do a section at a time. Do not let polish dry completely). We have supplied a special application brush to polish the inside passageway of the fluid tip. Polish...Wipe/rinse the brush...Repeat this process 2-3 times. Remove the polish residues with the supplied micro-Fiber Cloth and Buffing Pad.



Step Four: EZ Release Spray (for Waterborne & Solvent)

Apply EZ-Release w/ Micro-Film coating to all surfaces including air and fluid passageways. The micro-film coating is PH neutral and will minimize corrosion and will prevent paint from adhering to the surface. Re-apply after cleaning the spray gun during normal production. Note: Those w/ a BECCA Waterborne Spray Gun Cleaners do not need to reapply since the Micro-Film technology is in WaterWave™





ULTRA LITE™

Check Out Our Brief
Training Videos at
www.beccainc.com

Quick Disconnects

(for Compressed Air)



By BECCA

HIGH FLOW QD's Heavy Duty (BLACK)



Package of 6
Part# 825550 - 6

• FEATURES INCLUDE:

- Global High Flow Design
- 1/4" NPT Thread
- Corrosion Resistant Anodized Aircraft Aluminum Body (BLACK)
- Solvent Resistant Seal
- Stainless Steel Springs
- Satisfies both Female or Male Connections (w/Nipple)
- 35% Lighter than Standard Couplers

• PERFORMANCE CHARACTERISTICS

- 25% More Air Flow for Improved Performance
- Push Connect easy connection
- Max Pressure 300 PSI

HIGH FLOW STEMS

COMMON FEATURES

- Global High Flow Design
- 1/4" NPT Thread
- Corrosion Resistant
- Female or Male

COMMON PERFORMANCE CHARACTERISTICS

- 25% More Air Flow for Improved Performance
- Max Pressure 300 PSI

Heavy Duty (Silver)

Nitride Hardened Plated Steel



Package of 6
Part# 825652 - 6



Package of 6
Part# 825651 - 6

Jan 2019



BECCA®

2010 Cobb International Blvd, Suite H Kennesaw, GA 30152
Phone 800.655.5649 Fax 800.655.5684 Internet: www.beccainc.com



ULTRA LITE™



Quick Disconnects

By  **BECCA®**

(for Compressed Air)

STANDARD FLOW QD's

Heavy Duty (Red)



Package of 6
Part# 825785 - 6

• FEATURES INCLUDE:

- Standard Flow Industrial Type D Industrial Design - Short Nipple
- 1/4" NPT Thread
- Corrosion Resistant Anodized Aircraft Aluminum Body (RED)
- Solvent Resistant Seal
- Stainless Steel Springs
- Satisfies both Female or Male Connections (w/Nipple)
- 35% Lighter than Standard Couplers

• PERFORMANCE CHARACTERISTICS

- Push Connect easy connection
- Max Pressure 300 PSI

STANDARD FLOW STEM's

Light Duty (Red)

Red Anodized Aircraft Aluminum - 35% Lighter



Package of 6
Part#825788 - 6

Package of 6
Part# 825787- 6

COMMON FEATURES

- Standard Flow Industrial Type D
- 1/4" NPT Thread
- Corrosion Resistant
- Female or Male

COMMON PERFORMANCE CHARACTERISTICS

- Max Pressure 300 PSI

Heavy Duty (Silver)

Nitride Hardened Plated Steel



Package of 6
Part# 825918 - 6

Package of 6
Part# 825917 - 6



BECCA®

2010 Cobb International Blvd, Suite H Kennesaw, GA 30152
Phone 800.655.5649 Fax 800.655.5684 Internet:

BECCA Consumables - Salesman's Quick Reference



WATERWAVE



Part Number	Product Description	List Price
825190 - 6	6 Bottles of WATERWAVE Concentrate	\$150.00 *
825190 - 12	12 Bottles of WATERWAVE Concentrate	\$267.00 *

FLOCCER



Part Number	Product Description	List Price
825189	84 oz Bulk Container of FLOCCER	\$65.00 *
825185 - 25	25 FLOCCER Packets	\$64.00 *
825185 - 100	100 FLOCCER Packets	\$228.00 *

H2O DRY



Part Number	Product Description	List Price
836025	25 lb Bulk Container of H2O DRY	\$217.00 *
836840 New Size	84 Oz Bulk Container of H2O DRY	\$82.00 *
836002 - 6	6 Bottles of H2O DRY	\$53.00 *
836001K	Replenish Kit - 3 Liners, 6 Bottles, 3 Stir Sticks	\$75.00 *
CD - 50	Full Kit - 1 Container, 3 Liners, 6 Bottles, 3 Stir Stick	\$86.00 *

RE-NU



**Advanced
Gun Polishing
System**

Part Number	Product Description	List Price
825175	RE-NU Advanced Gun Polishing System	\$108.00 *
NEW Product	Includes: a Microfiber Cloth, Gloves, Spray Bottle of EZ Release, a Nylon Brush, a Polishing Cone and Paste.	

Quick Disconnects



Part Number	Product Description	List Price
825550 - 6	6 Pack High Flow (Black) QD's	\$143.00 *
825785 - 6	6 Pack Std Flow (Red) QD's	\$143.00 *

High Flow Stems/Nipples



Part Number	Product Description	List Price
825652 - 6	6 Male Heavy Duty HF (Silver) Stems	\$21.00 *
825651 - 6	6 Female Heavy Duty HF (Silver) Stems	\$21.00 *

Standard Flow Stems/Nipples



Part Number	Product Description	List Price
825918 - 6	6 Male Heavy Duty SF (Silver) Stems	\$21.00 *
825917 - 6	6 Female Heavy Duty SF (Silver) Stems	\$21.00 *



Part Number	Product Description	List Price
825788 - 6	6 Male Light Duty SF (Red) Stems	\$12.00 *
825787 - 6	6 Female Light Duty SF (Red) Stems	\$12.00 *

*FOB Kennesaw, GA USA - Prices Subject to Change

Consumables-Salesman 2018



Why Leasing?

Leasing is the easiest way to show a customer a very fast return on investment of the BECCA equipment. In fact, in most cases the lease payment is less than his current method of handling solvent and waste currently.

By leasing you can show a customer what they are currently spending and what a monthly payment would be with their new equipment. BECCA has found a lease company that is very aggressive and has many benefits compared to other lease company's from the past.

Why Leasing?

- ✓ **Minimal Investment up front for customer.**
- ✓ **Conserve existing credit line.**
- ✓ **Lease payment usually lower than current payments for waste removal, solvent purchase and if they are renting product.**
- ✓ **Great Tax benefits (Customer should consult tax adviser)**

Why BECCA Leasing Partners?

- ✓ **All ready know and understand BECCA Products**
- ✓ **Easy Application**
- ✓ **No pre-payment penalties**
- ✓ **No fees of any kind.**
- ✓ **All leases \$ 1.00 purchase option.**
- ✓ **Easy Process:**
 - **Customer signs your quote**
 - **You fax to Leasing Partner**
 - **Leasing Partner sends docs to customer**
 - **Customer signs and sends first and last payment with docs**
 - **You receive a PO & Send PO to BECCA Inc**
 - **BECCA ships equipment.**
 - **Customer signs off on equipment**
 - **Leasing company sends check**

BECCA Inc Leasing Partners:

- **Lease Corporation of America 800-800-8098**
- **Navitas Lease Finance Corp 866-956-2848**
- **Trinity Finance 800-841-4433**

Special BECCA Rates:

ASK FOR CURRENT RATES



Waterborne Paint Process Waste Minimization SOP

How to minimize Hazardous waste to Near Zero.....Waterborne Basecoat & Solvent Clear/Primers

Using BECCA RE-NU, Spray Gun Cleaner System, WATER WAVE™, FLOCCER™ & H2O DRY™

Solvent Paint Process Waste Minimization begins by Detail Cleaning & Polishing of Spray Gun to like new condition

**RE-NU
Spray Gun
Cleaning &
Polishing
System**



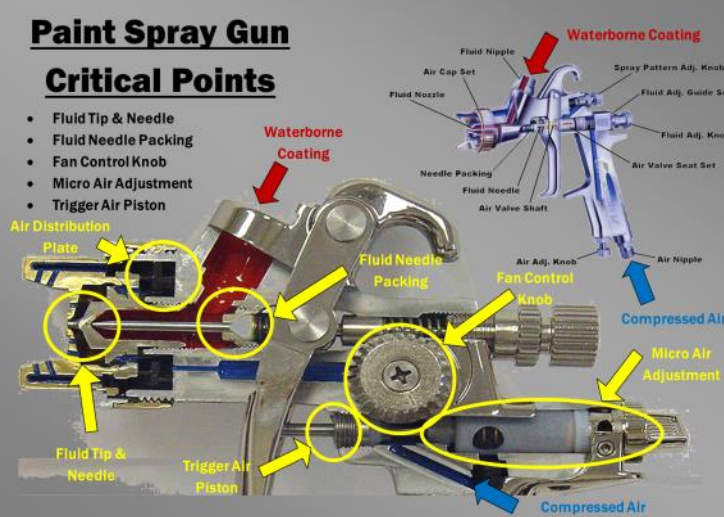
Waterborne Paint Process Waste Minimization is maintained by Using the proper Cleaning System



Paint Spray Gun

Critical Points

- Fluid Tip & Needle
- Fluid Needle Packing
- Fan Control Knob
- Micro Air Adjustment
- Trigger Air Piston



Waterborne Waste Minimization must have Proper Cleaning Fluid

- Water Wave™ has no Hazardous materials
- Specifically designed for Waterborne Paint Removal
- Leaves Micro-Film (No harm to paint) on Spray Gun surface for easy cleaning
- Superior when Heated
- Concentrated for easy delivery & makes 5 Gal
- Keeps fluid PH Neutral



Cleaning Fluid Process

1. Shake Bottle of Water Wave
2. Mix 1 Bottle of Water Wave concentrate w/ 5 Gallons of Water or 1 Measure cup w/ pressurized Little Squirt Spray Gun Cleaner
3. Maintain ratio of Water Wave to water added as evaporation occurs
4. Use Clarification Recycling Process to re-use Cleaning solution over & over



Recycle Waterborne Cleaning Fluid by Clarification/Flocculation

- FLOCCER™ has no Hazardous materials
- Specifically designed to remove paint from the cleaning fluid
- BECCA Clarification System is easy to use and does not tie up the Spray Gun Cleaner



Recycling Process

1. Use BECCA Clarifier Recycling System
2. Add 3-4 Packets or 1 Scoop of FLOCCER per Week of Use to Clarify Liquid
3. Follow Step-by-Step Poster for maximum success!
4. Reuse Cleaning solution over & over. Add proportionate amount of Water Wave when replacing evaporated water.



Dispose of Waterborne Paint in the Regular Waste Stream **

- H2O Dry™ has no Hazardous materials
- Specifically designed to dry out & inert waste paint
- Simple System that is easy to use



Waterborne Paint Disposal Process **

1. When finished spraying vehicle remove Disposable Cup. Pour any remaining paint into the Disposable Cup.
2. Rinse Spray Gun one time into Disposable Cup.
3. Add 1:10 Ratio by Weight H2O Dry to Paint to Disposable Cup and stir for 30 seconds.
4. Maximum Performance - Identify shelf to hold disposable cups from daily process. Process each at the end of the day. Next morning Dispose of Cups **



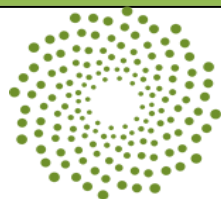
**** Dispose of All Wastes in Accordance w/ all Federal, State, & Local Requirements. Must have Waste Tested and documentation kept on file. Testing Labs can be found by using an online search engine..... Use "Hazardous Material Testing Lab " and your city.**

©Copyright Sept 2018



2010 Cobb International Blvd, Suite H Kennesaw, GA 30152
Phone 800.655.5649 Fax 800.655.5684 Internet: www.beccainc.com

Check out our
Brief
Training Videos at
www.beccainc.com



BECCA®

Waterborne Manual Spray Gun Cleaning SOP

Clean Gun As Soon As Possible.

Tan pronto como sea posible en la pistola limpia.

Use
WATERWAVE



HEAT System

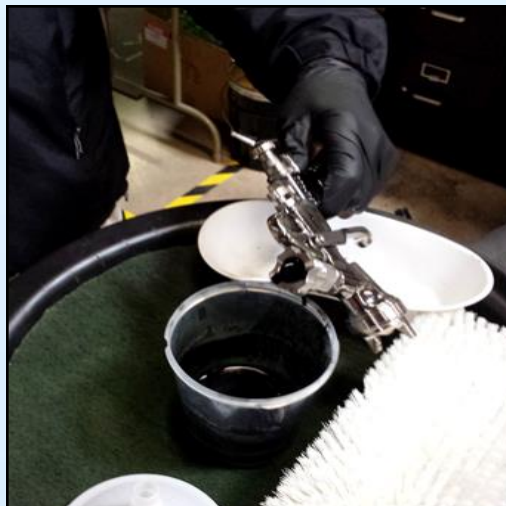


**For Top
Performance**

Step 1.

Detach Disposable Cup & POUR WASTE FROM GUN into Cup or Container

Separar Copa desechable y verter residuos de pintura pistola en la cubeta



Step 2.

PRE-RINSE GUN Into Disposable Cup or Container..... Trigger Gun

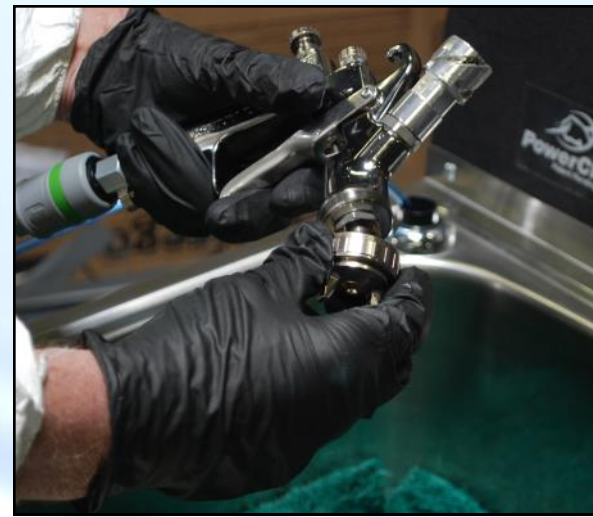
Pistola en Taza desechable Pre Rinse.....gatillo de la pistola.



Step 3.

REMOVE AIR CAP

Eliminar Air Cap



Step 4.

POWERCLEAN™

Quick-connect compressed air.

Conexión rápida de aire comprimido



Step 5.

FLOW BRUSH

- **Clean air cap**
Limpiar Air Cap
- **Clean fluid tip**
Limpiar el líquido del Consejo



Step 6.

POWERPISTOL™

Trigger gun at same time

Cañón de desencadenador al mismo tiempo



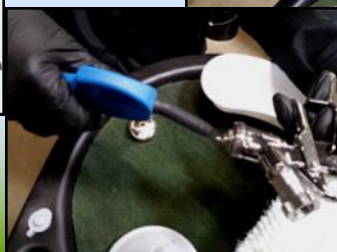
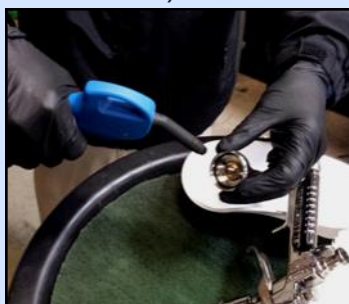
Step 7.

BLOW GUN

Trigger gun - removing all moisture

Cañón de desencadenador - eliminación de humedad

- **Fluid passages** *Pasajes de líquido*
- **Fluid tip** *Punta fluido*
- **Air Cap** *Tapón de aire*
- **Gun surfaces** *Las superficies de la pistola*
- **DO NOT CHASE W/ SOLVENT!** *No persiga W / SOLVENTE!*



Step 8.

POWERCLEAN™

Disconnect compressed air.

Desconectar de aire comprimido



Step 9.

ADD H2O DRY™

To the Disposable Cup or Container

Añadir H2O DRY Para la Copa desechable



See Waterborne Paint Waste Minimization SOP Poster
Ver Waterborne Residuos de pintura SOP Minimización Poster

©Copyright Sept 2018



BECCA®

2010 Cobb International Blvd, Suite H Kennesaw, GA 30152
Phone 800.655.5649 Fax 800.655.5684 Internet: www.beccainc.com