

Technical Service Bulletin

News for Service Partners of BECCA

Issue no. 6, April 2001

In this issue:

1. Seal Installation
2. "New" Stainless Steel Cover
3. Seal Replacement Selector

Product information

You can follow below or go to: www.beccainc.com to watch our video

Hover over the Products tab, then select the 3 & 6-gal recycler and click on it, on the right-hand side of the page under Watch our Videos, the last one is the Seal Replacement Procedure click on the picture and click again to start the video.

Recycler 3 & 6 Gallon - Seal Replacement & New Stainless Steel Cover Design

Replacing a seal properly is a very important process. Improper installation will result in vapor leakage. This will create a somewhat dangerous environment both fire hazard and worker health and of course a visit back to the site. In order to make sure a proper installation is made, you must utilize the following procedure:

- 1) Remove the old seal (**See Picture #1**).
- 2) Clean the seating surface area (**See Picture #2**)



Picture1



Picture2

- 3) Place the new seal on top of the seating area (**See Picture #3 on next page**).
- 4) Push seal (not all the way down yet), without stretching the seal, just to set in place. Always leave one small area up to allow the air trapped under the seal to escape (**See Picture #4 on next page**).
- 5) Pick a spot on the lid, now push down the seal, it should touch the inside shoulder of the cover so that little to no air is trapped between the seal and the cover. **IMPORTANT!** Only Do One Half of the Lid (leaving air escape path) and then go the other direction and do the other half of the lid.
- 6) The last part of the seal to push in is the area left up to allow trapped air to release. Push this area in and spread any access material out throughout the rest of the seal



Picture 3



Picture 4

- 7) When the seal is installed you should not see any wave on the seal it should be flat to seal properly (See Picture #5).



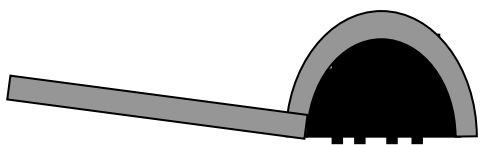
Picture 5

New Lid Design (Since 2001)

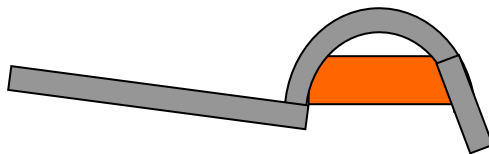
We have implemented a new upgraded spun lid design (See Picture 6). This lid has a squared recess for the seal and a better flatness tolerance than the old unit. (Note: It will fit on Orange Seal units only)



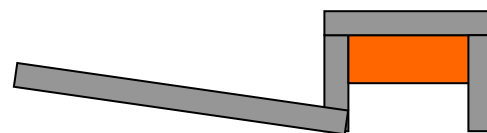
Picture 6



Oldest Lid Design (1995 – 1998)



Older Lid Design (1998 – 2001)

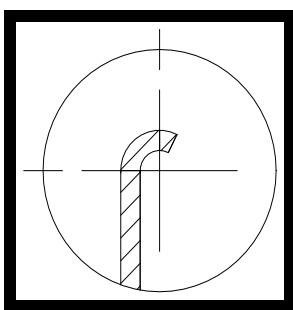


New Lid Design (2001 – Present)

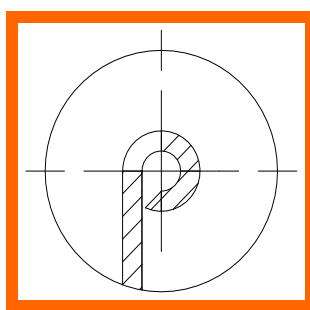
Seal Replacement Reminder

When it comes time to replace the lid, it is important to note that you cannot interchange the cover or the black seal with the new style cover or orange seal. The reason is simple; the boiler is not the same shape at the lip where the lid makes contact (see **Picture 7** and **Picture 8**). Serial numbers starting with A, B, C and D are the units that are affected (refer to the table below). Not all D series have a black epdm seal.

To simplify matters, ask your customer for the serial number and/or the boiler shape to identify the proper style.



Picture 7
Flanged style



Picture 8
Rolled edge style

Serial #	Year	Lid design	Seal type	SEAL Part #		LID Part #	
				3 Gals.	6 Gals.	3 Gals.	6 Gals.
A#####	1995	Flanged	Epdm black	804003	804013	801011	801021
B#####	1996	Flanged	Epdm black	804003	804013	801011	801021
C#####	1997	Flanged	Epdm black	804003	804013	801011	801021
D#####	1998	Flanged	Epdm black	804003	804013	801011	801021
D#####	1998 Jul	Rolled Edge	Orange	804008	804018	801010	801020
E#####	1999	Rolled Edge	Orange	804008	804018	801010	801020
F#####	2000	Rolled Edge	Orange	804008	804018	801010	801020
To Current Date							